



## SAMPSON COUNTY 911 & ES FACILITIES

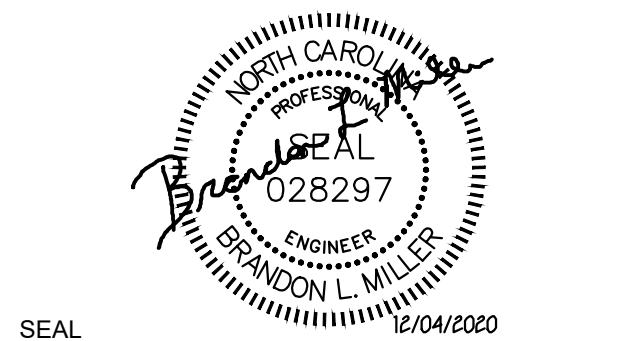
CLINTON,  
NORTH CAROLINA

CONSTRUCTION  
DOCUMENTS

GROUNDING  
DETAILS

DATE 12.04.2020  
PROJECT NO 20003  
REVISIONS  
NUM. DATE DESCRIPTION  
12-17-2020 REVISION #1

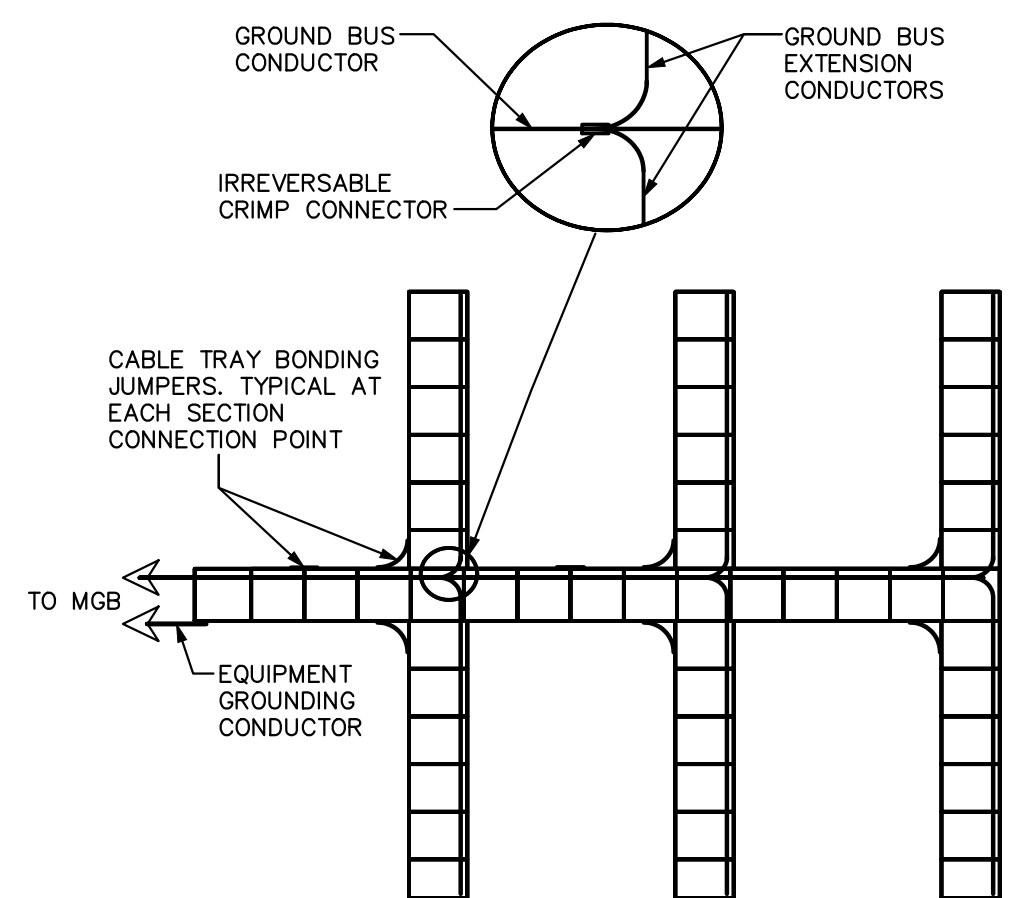
THIS DRAWING IS THE PROPERTY OF ADW ARCHITECTS, P.A. AND SHALL NOT BE REPRODUCED OR COPIED IN WHOLE OR IN PART. IT SHALL NOT BE USED ON ANY OTHER PROJECT OR GIVEN TO ANY OTHER COMPANY OR AGENCY WITHOUT THE CONSENT OF ADW ARCHITECTS, P.A.



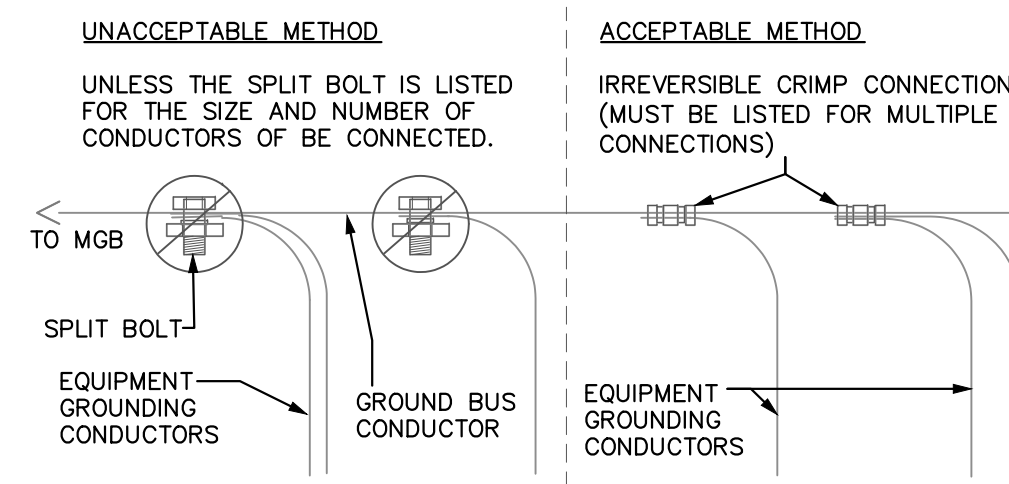
SEAL

SHEET NUMBER

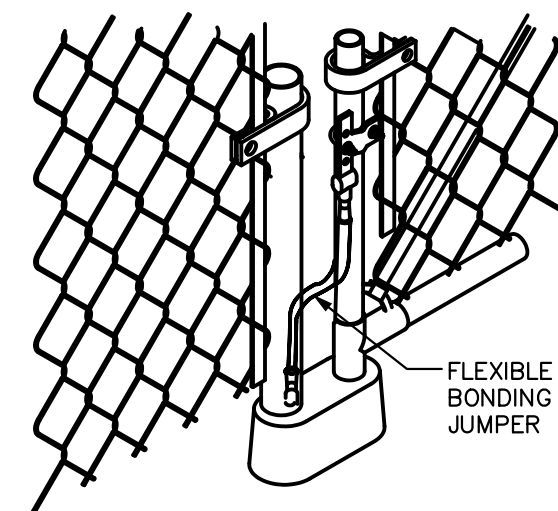
E014



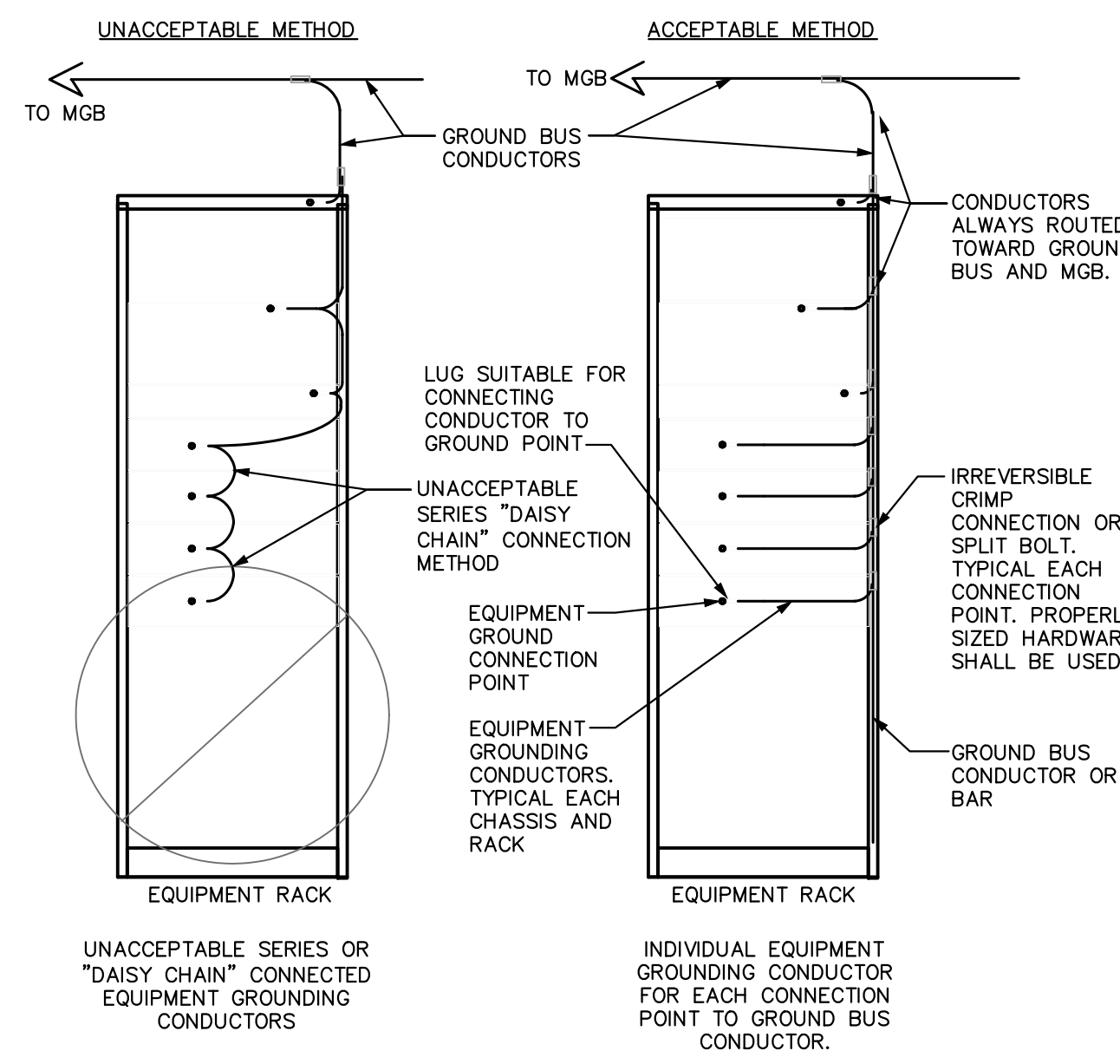
1 CABLE TRAY GROUNDING DETAIL  
NOT TO SCALE



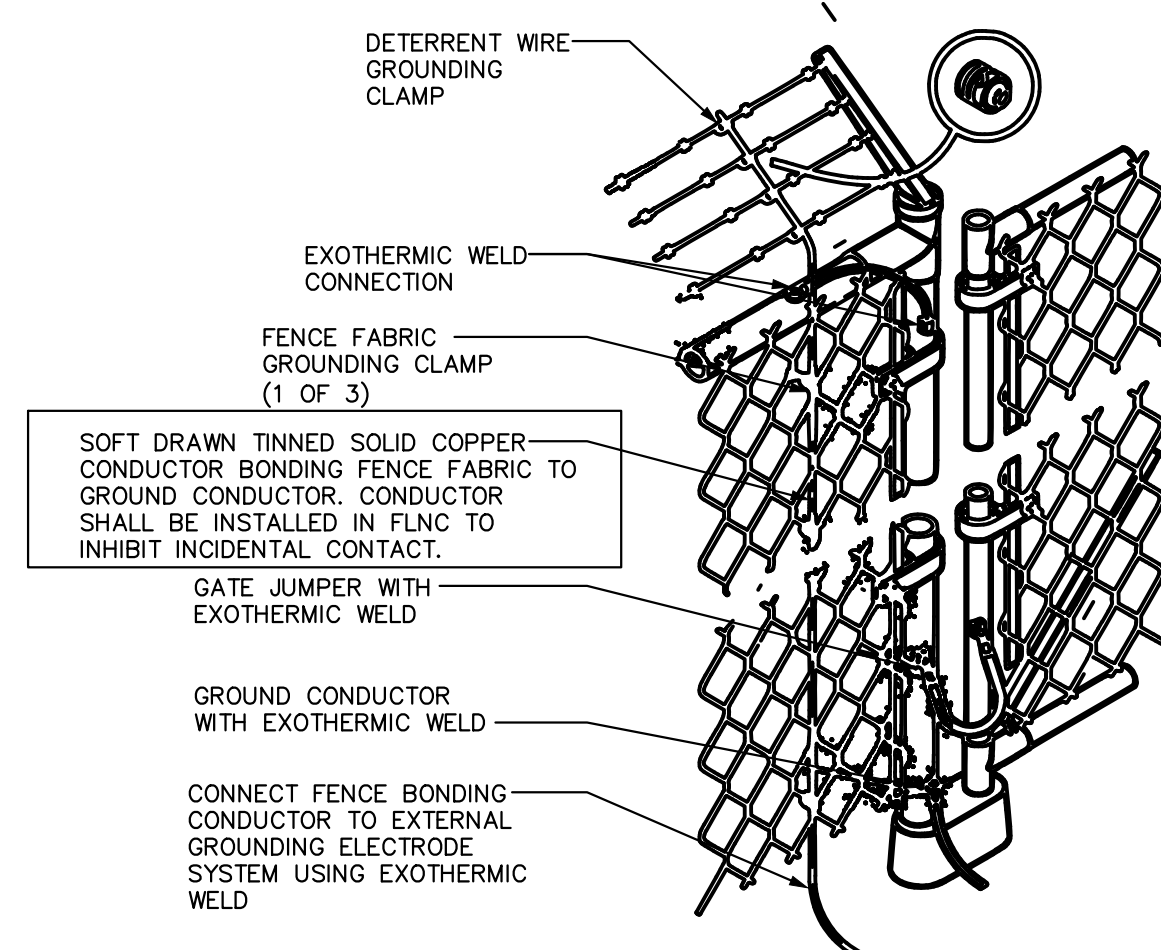
2 GROUND CONNECTION TYPES  
NOT TO SCALE



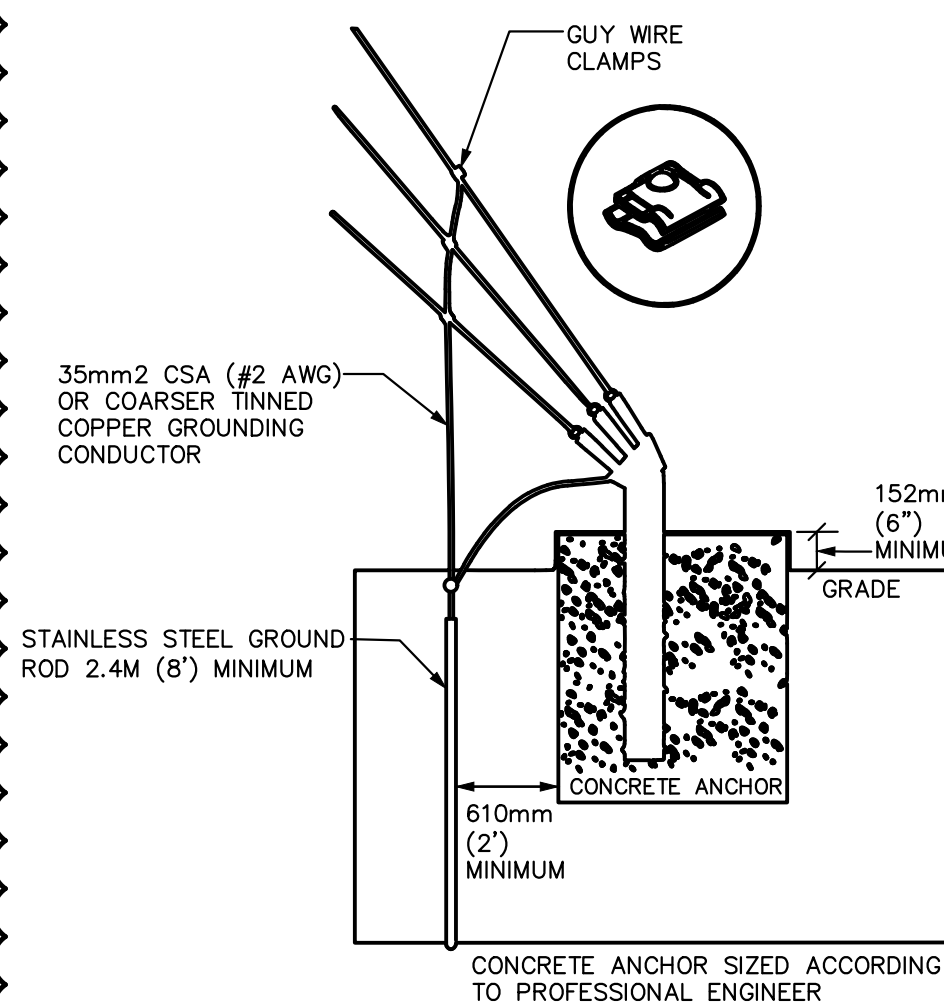
3 GATE GROUNDING DETAIL  
NOT TO SCALE



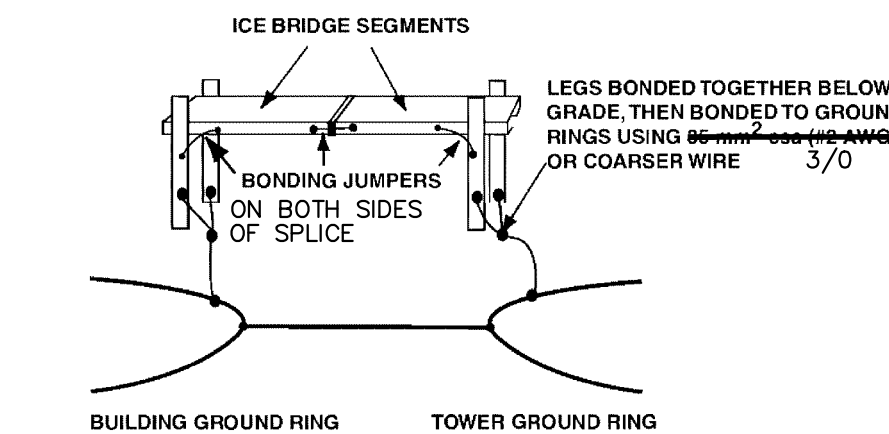
4 EQUIPMENT RACK BONDING DETAIL  
NOT TO SCALE



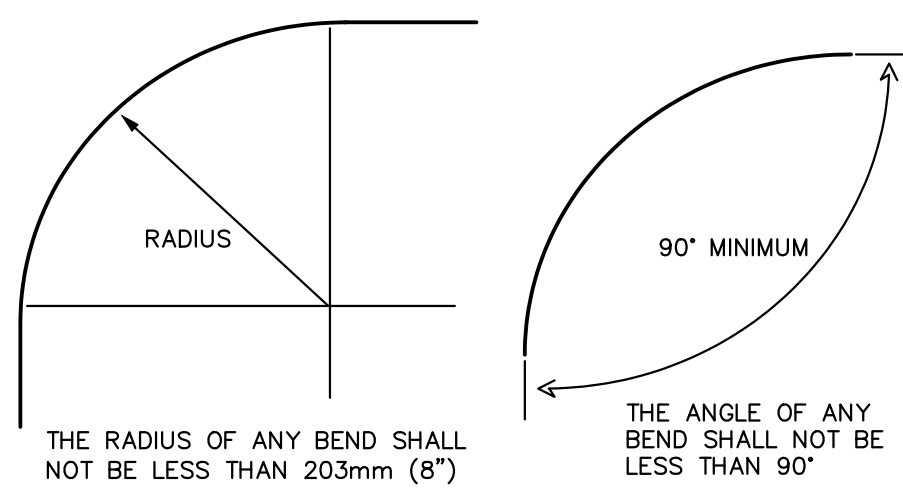
5 FENCE GROUNDING DETAIL  
NOT TO SCALE



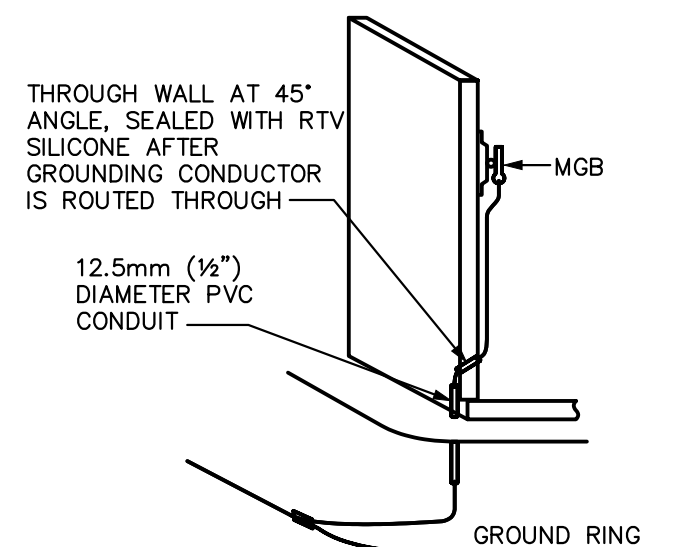
6 GUY WIRE GROUNDING DETAIL  
NOT TO SCALE



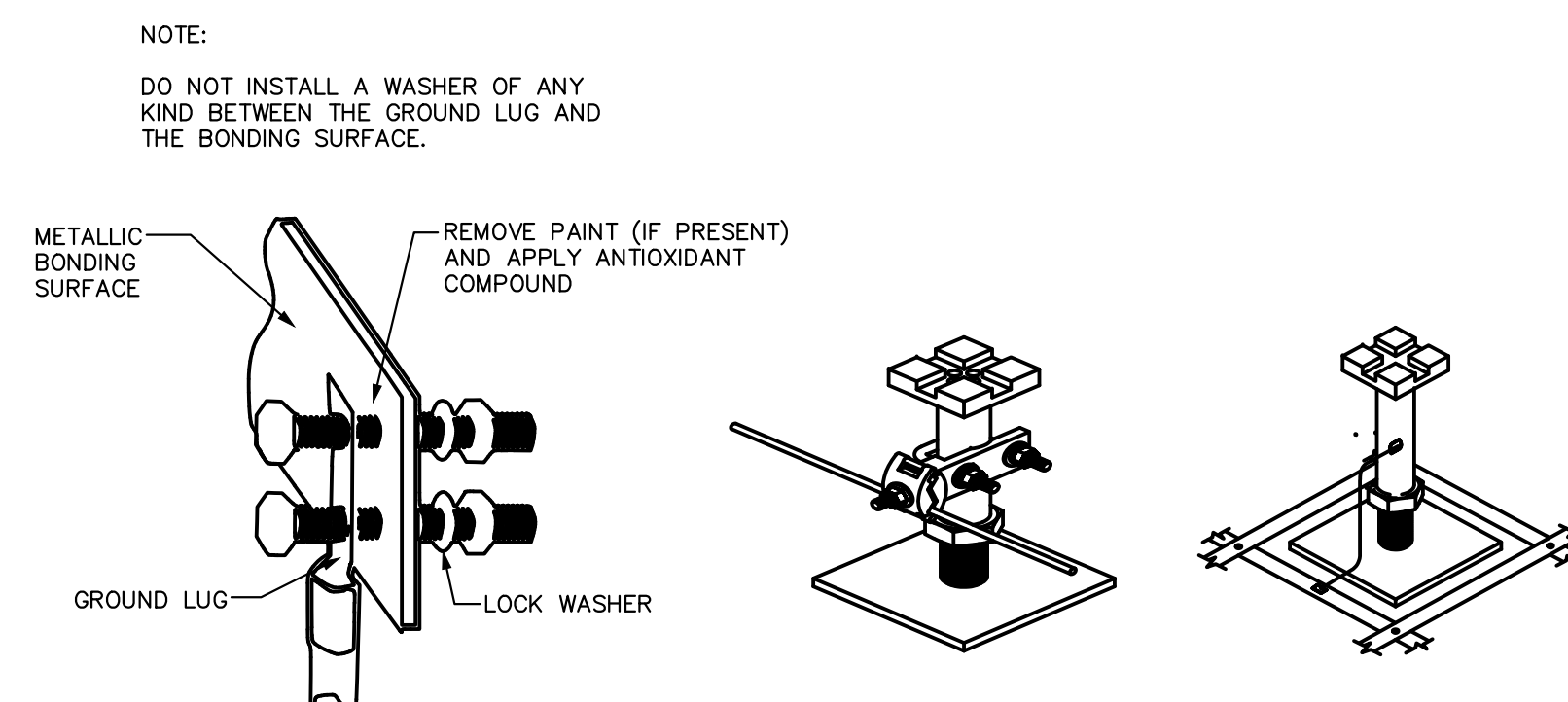
7 ICE BRIDGE GROUNDING DETAIL  
NOT TO SCALE



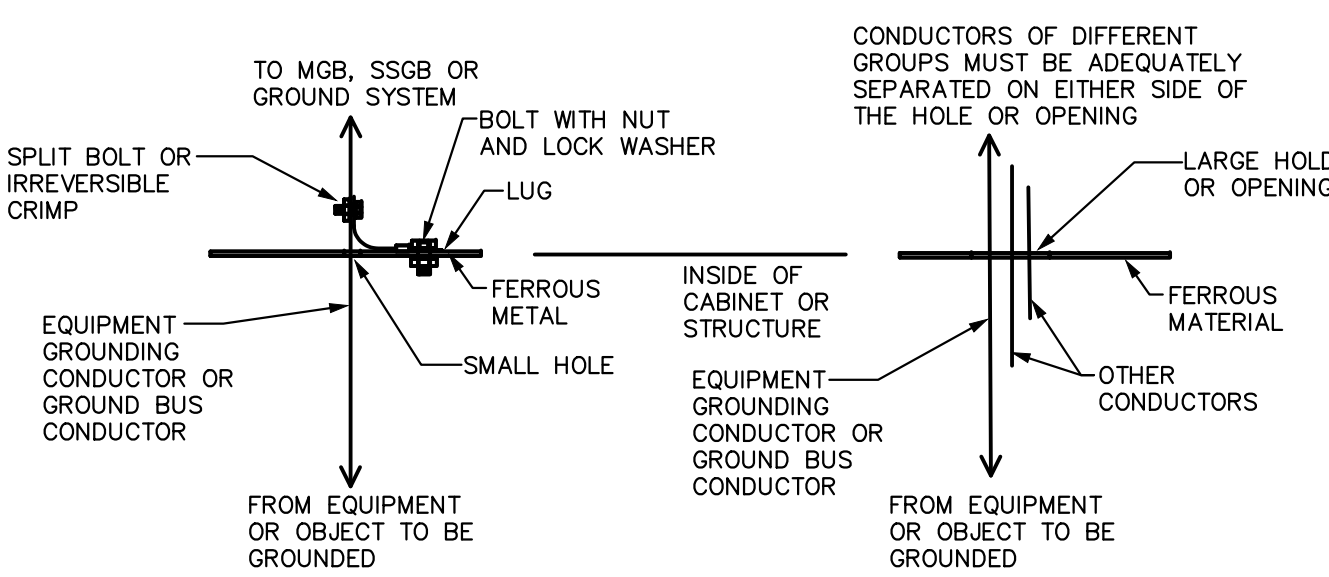
8 ACCEPTABLE GROUNDING  
CONNECTION BENDING  
NOT TO SCALE



9 ROUTING OF MGB  
GROUNDING CONDUCTOR  
NOT TO SCALE



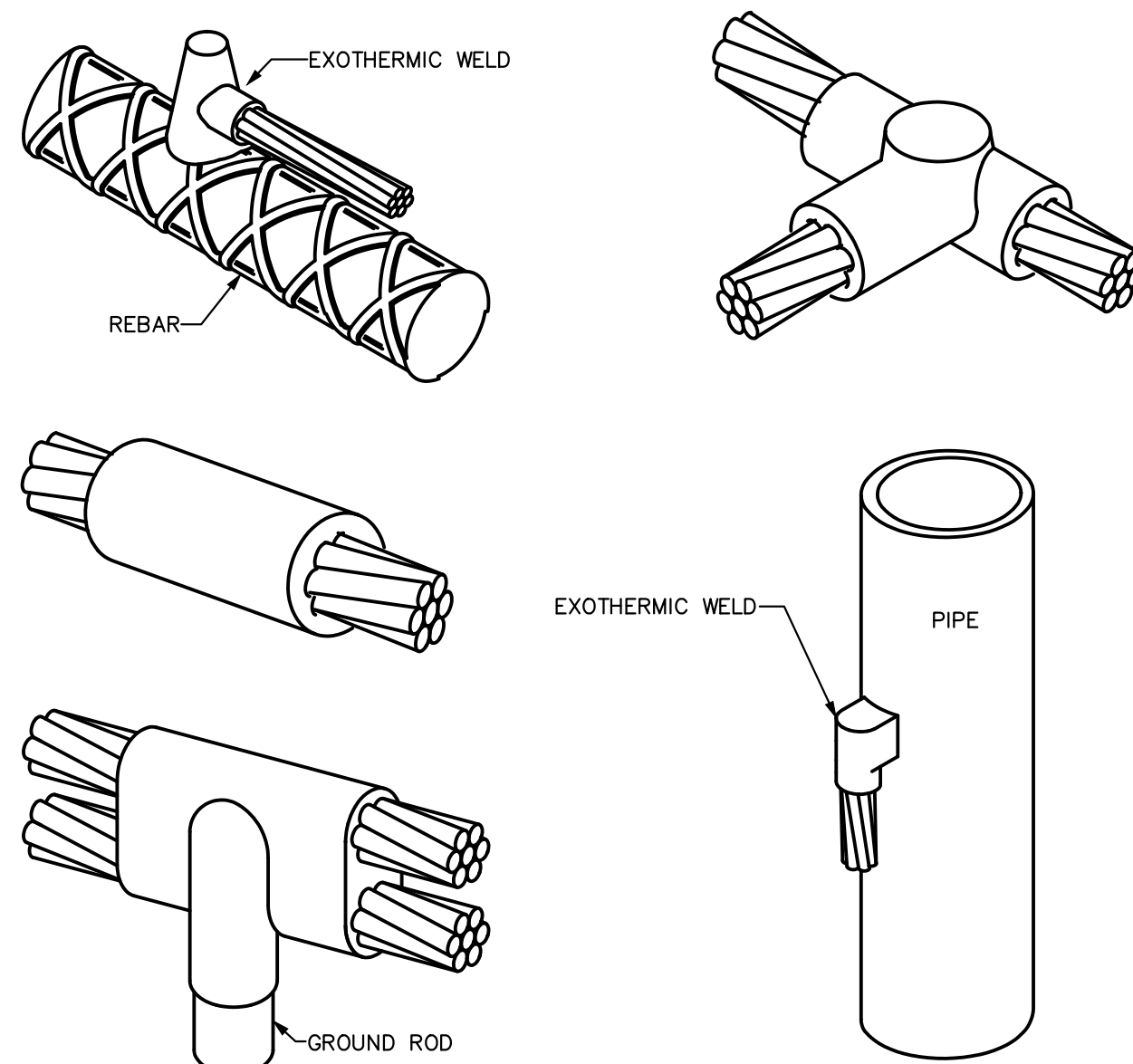
10 ACCEPTABLE GROUNDING CONNECTIONS  
NOT TO SCALE



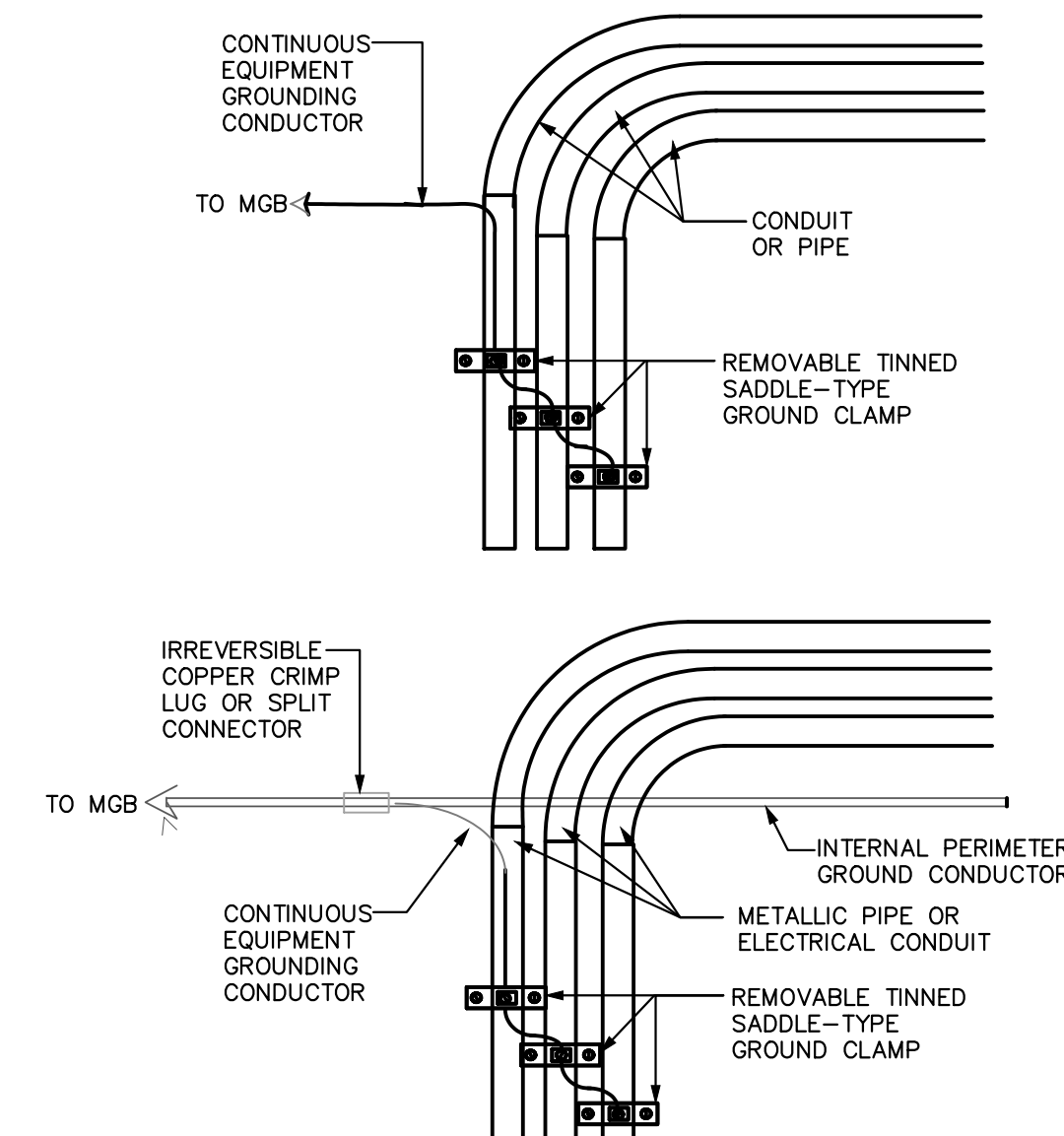
11 ROUTING OF MGB  
GROUNDING CONDUCTOR  
NOT TO SCALE



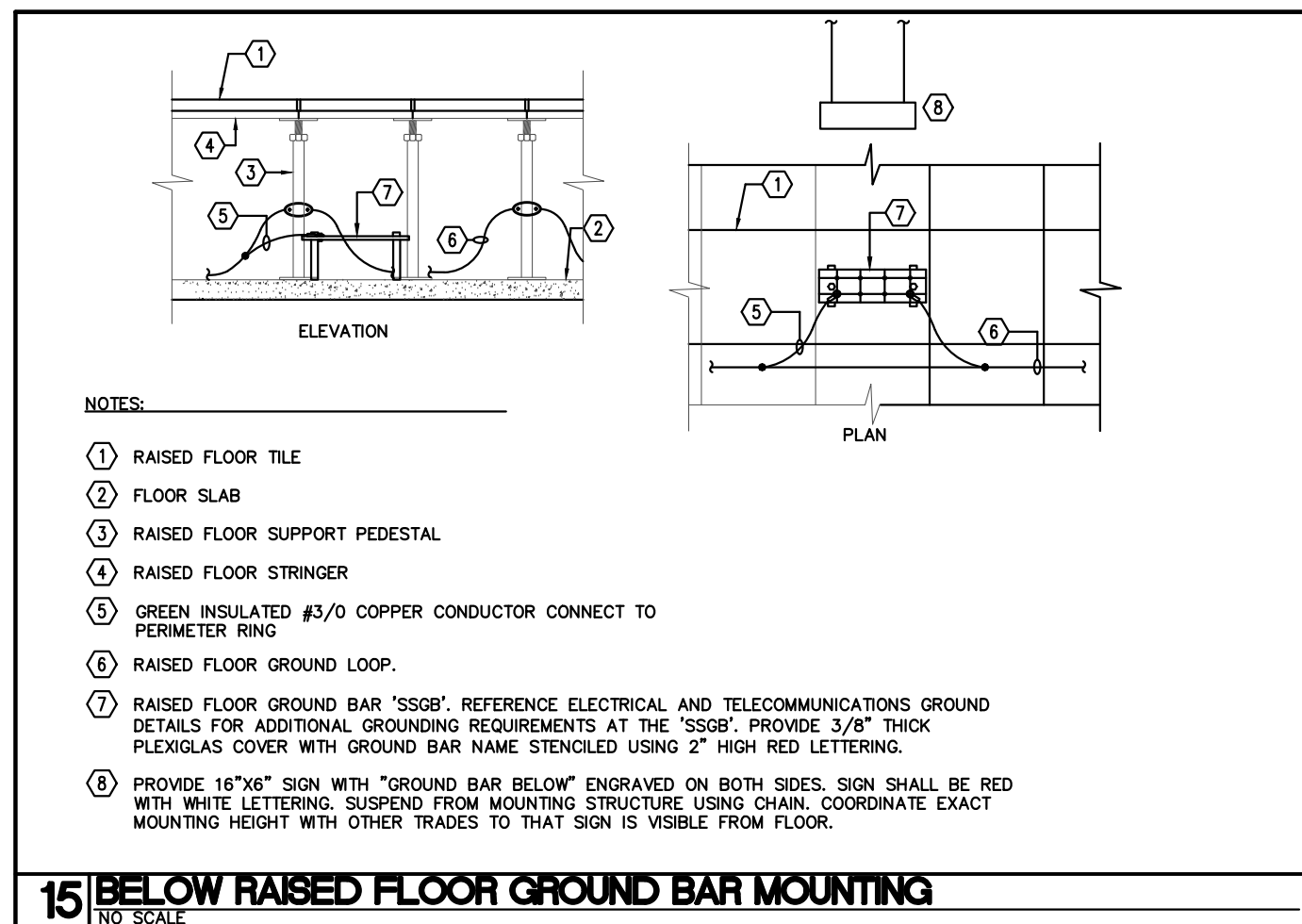
12 HIGH-COMPRESSION CONNECTORS  
AND TYPICAL CRIMPING TOOLS  
NOT TO SCALE



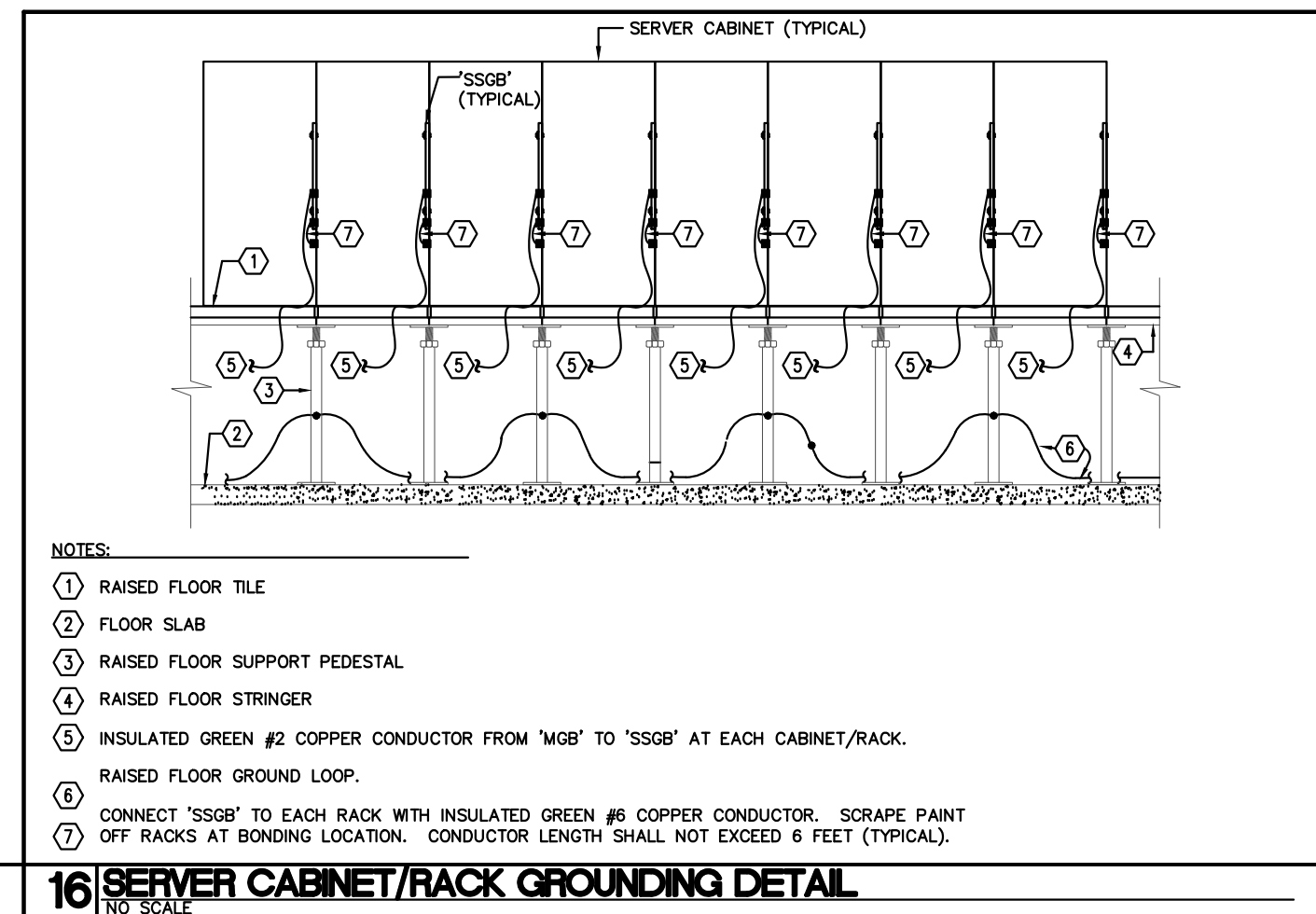
13 EXAMPLES OF COMPLETED EXOTHERMIC WELDS  
NOT TO SCALE



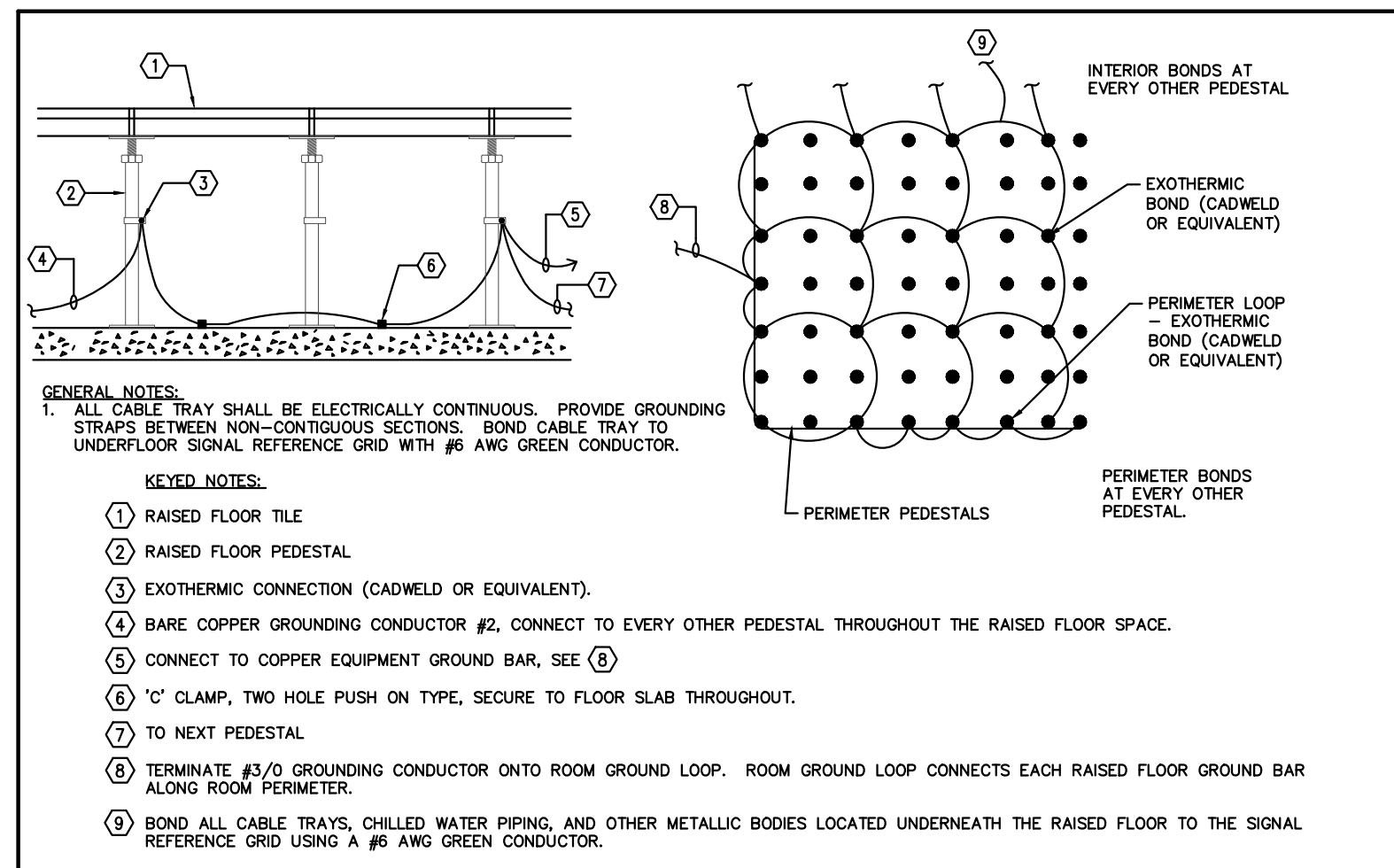
14 GROUNDING METHOD  
FOR METALLIC PIPE/CONDUIT  
NOT TO SCALE



15 BELOW RAISED FLOOR GROUND BAR MOUNTING  
NOT TO SCALE



16 SERVER CABINET/RACK GROUNDING DETAIL  
NOT TO SCALE



17 RAISED FLOOR GROUNDING DETAIL  
NOT TO SCALE